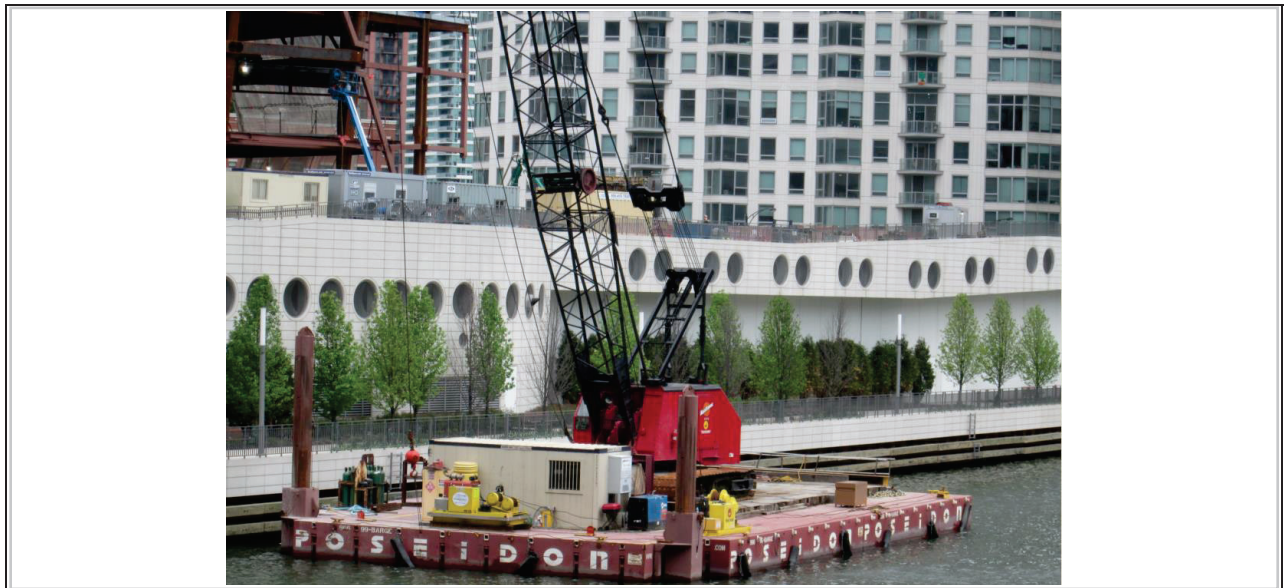
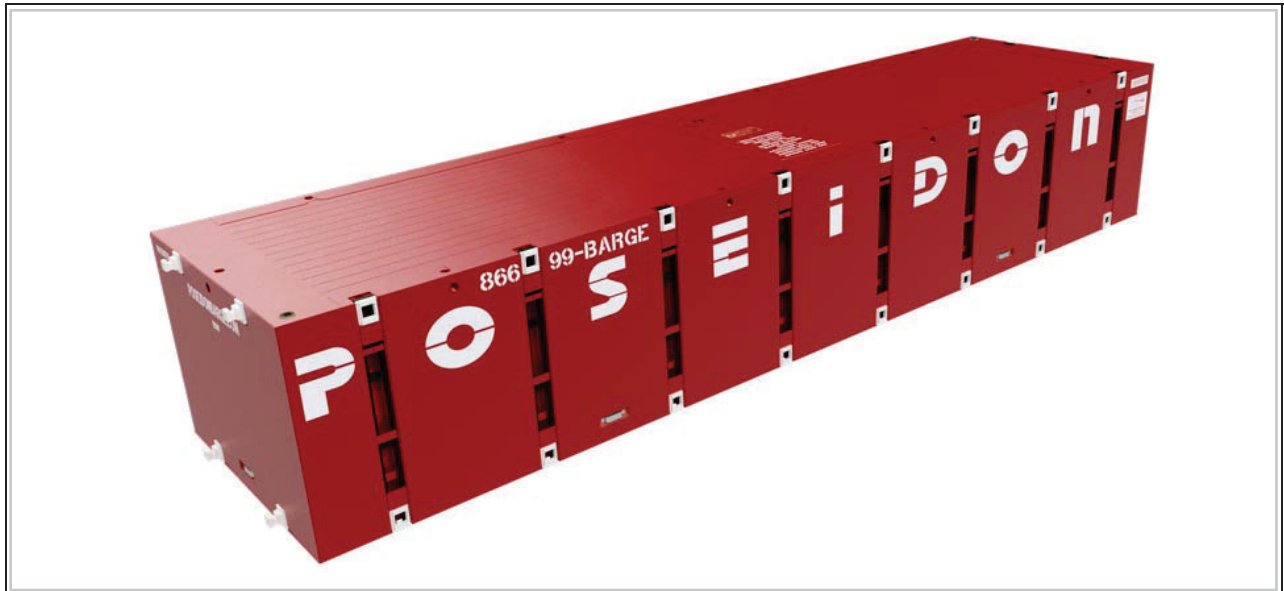


Poseidon

Section 40'x10'4"x7'

USCG Number:



Specifications:

VESSEL NAME: Poseidon

DIMENSIONS: 40'x10'4"x 7'

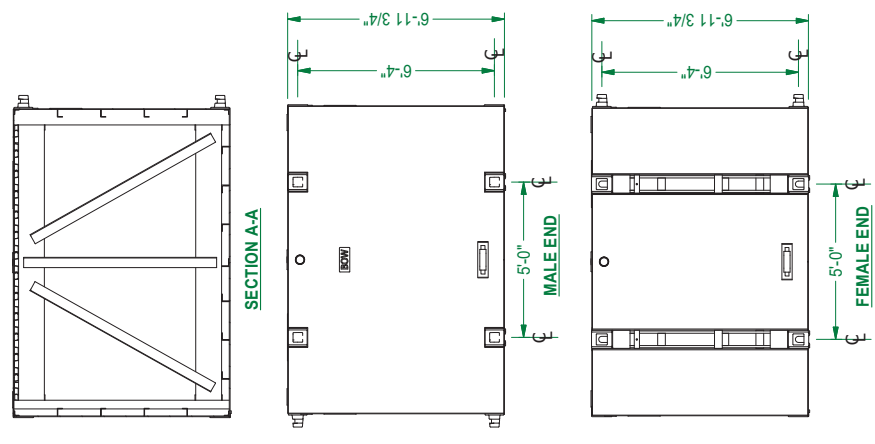
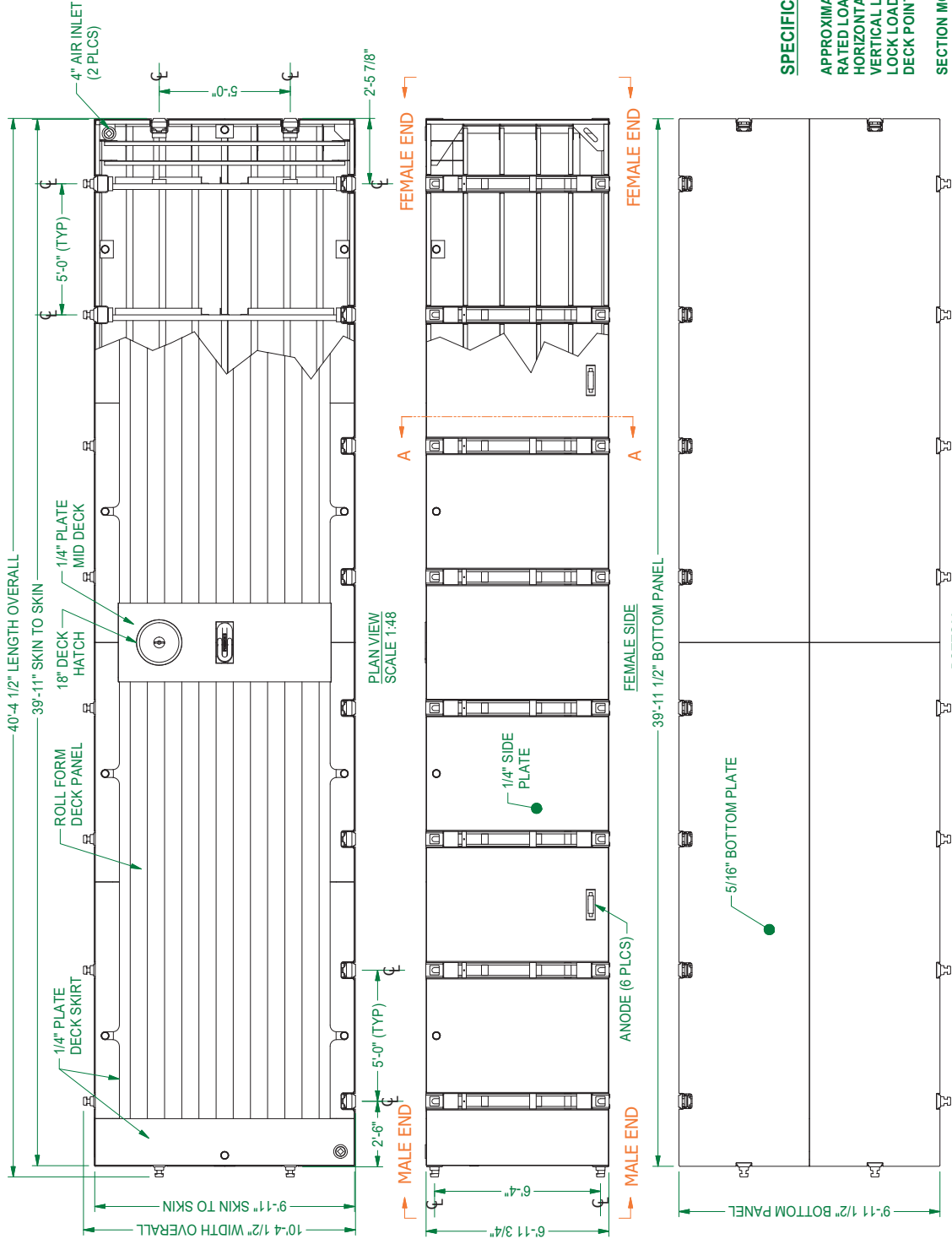
LOAD CAPACITY: 28 Tons

BUILDER: Poseidon

LIGHT DRAFT: 16"

GROSS TONNAGE: 15.71

LAST DRY DOCK: n/a



SPECIFICATIONS P2-7-40 BARGE

- APPROXIMATE UNIT WEIGHT: 31,420 LBS
- RATED LOAD CAPACITY AT 3.5 FT DRAFT: 28.0 TONS
- HORIZONTAL LOCK SPACING: 5.0 FT
- VERTICAL LOCK SPACING: 6.3 FT
- LOCK LOAD RATING: 140 KIP AXIAL/SHEAR
- DECK POINT LOAD CAPACITY: 20,000 PSF

SECTION MODULUS OF SECTION BETWEEN TRUSSES
 BARGE DECK: 3757 IN³
 BARGE BOTTOM: 4646 IN³

SCALE	As Noted
DRAWN BY	F.James
DATE	6/30/2014
CHK'D BY	J.Emch
DATE	6/30/2014
APP'D BY	J.Emch
DATE	6/30/2014

PROPRIETARY INFORMATION
 Poseidon Barge Ltd claims rights to all information disclosed on this drawing. It is in confidence for engineering information only and may not be reproduced or used to manufacture anything disclosed within the confines of this drawing without written authorization from Poseidon Barge Ltd

ALL DIMENSIONS ARE IN INCHES EXCEPT WHERE STATED OTHERWISE.
 x.x = ± 0.03
 x.xx = ± 0.015
 FRACTIONS = ± 1/16
 ANGLES = ± 0.5°

725 E Parr Road
 Berne, Indiana 46711
 Phone: 1-260-422-8767
 Fax: 1-260-207-8636

