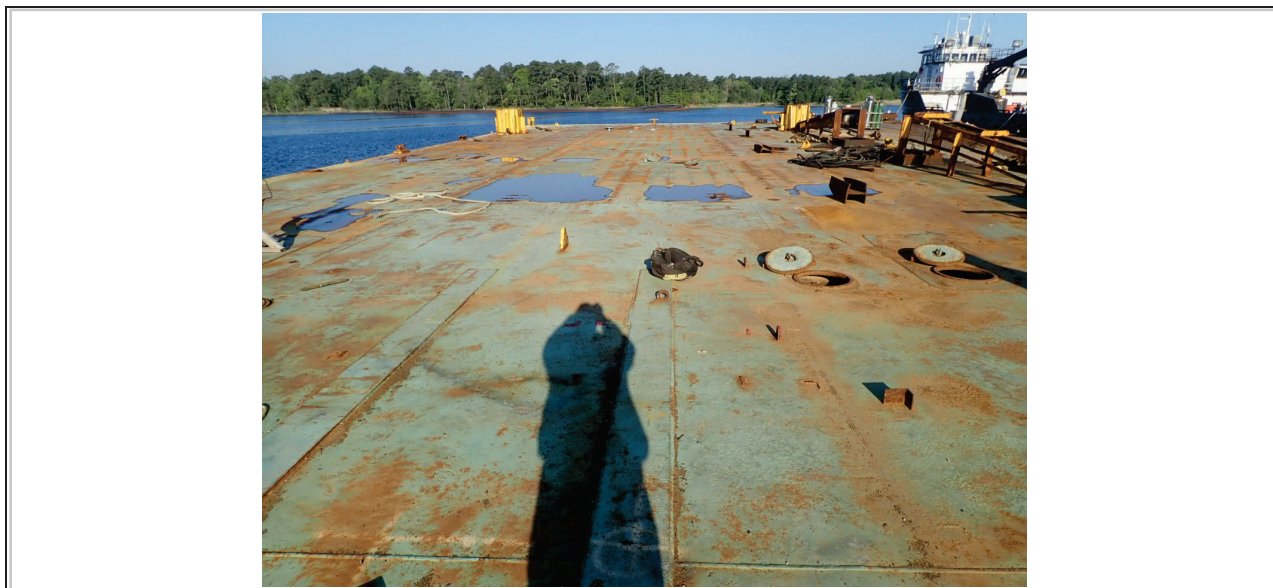


KS-1355

Deck Barge:135'x55'X 8'

USCG Number:



Specifications:

VESSEL NAME: KS-1355

DIMENSIONS: 135'X55'X8'

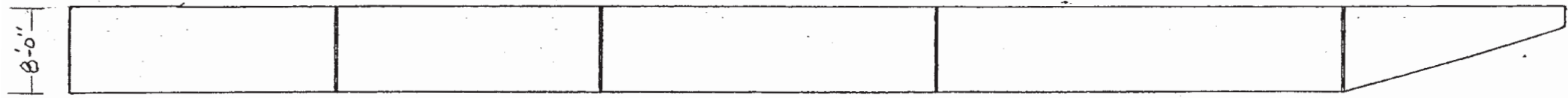
LOAD CAPACITY: 1,200 tons

BUILDER: Conrad Industries

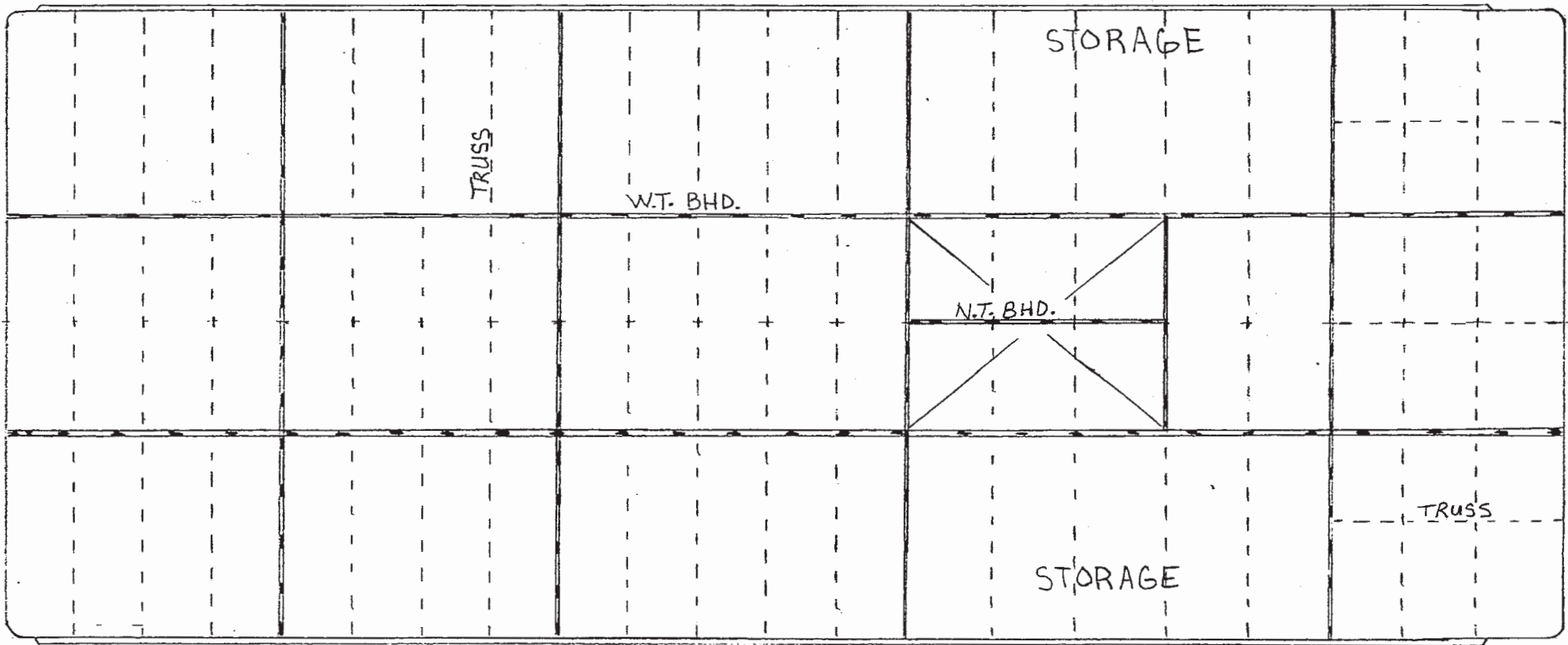
LIGHT DRAFT: 18"

GROSS TONNAGE: 498 tons

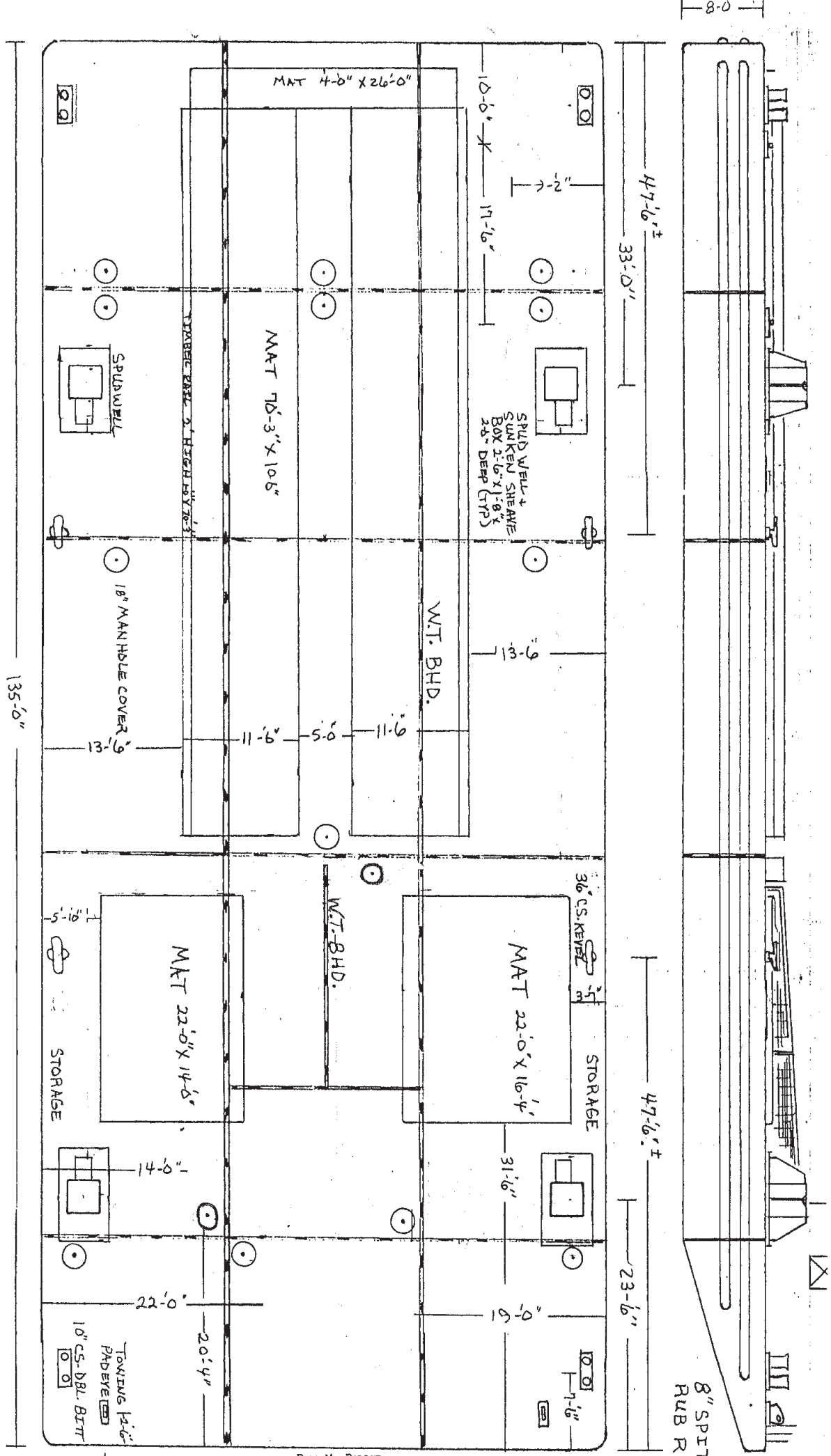
LAST DRY DOCK: 2022



4 SPACES @ 6'-0" = 24'-0" 4 SPACES @ 6'-0" = 24'-0" 5 SPACES @ 6'-0" = 30'-0" 5 SPACES @ 7'-4" = 37'-0" 20'-0"
 6'-3" 6'-3" 7'-6"



24'-0" 24'-0" 30'-0" 37'-0" 20'-0"
 135'-0"



GENERAL ARRANGEMENT

Displacement Table

| Barge Name | Barge Size | Freeboard | Draft | Displacement Short Tons | |
|---|------------|---|----------|----------------------------|-------|
| <u>KS 452</u> ex WH 705 assume 18" light draft | 135x45x9 | 7.5' | 1.5' | 0 | 0 |
| | | 7.0' | 2.0' | 86 | 86 |
| | | 6.0' | 3.0' | 261.4 | 260 |
| | | 5.0' | 4.0' | 440.1 | 440 |
| | | 4.0' | 5.0' | 622.1 | 620 |
| | | 3.0' | 6.0' | 807.2 | 810 |
| | | 2.0' | 7.0' | 995.3 | 995 |
| | | 1.0' | 8.0' | 1183.7 | 1185 |
| <u>KS 132</u> ex WH 702 <u>KS 133</u> ex WH 703 assume 18" light draft | 120x35x8 | 6.5' | 1.5' | 0 | 0 |
| | | 6.0' | 2.0' | 57.3 | 55 |
| | | 5.0' | 3.0' | 174.5 | 175 |
| | | 4.0' | 4.0' | 295.1 | 295 |
| | | 3.0' | 5.0' | 419 | 420 |
| | | 2.0' | 6.0' | 546.2 | 545 |
| | | 1.0' | 7.0' | 676.4 | 675 |
| <u>U-150</u> ex WH 735 KS 1503 ex WH 724 KS 1504 ex WH 734 assume 18" light draft | 150x55x9 | 7.5' | 1.5' | 0 | 0 |
| | | 7.0' | 2.0' | 115.1 | 115 |
| | | 6.0' | 3.0' | 349.1 | 350 |
| | | 5.0' | 4.0' | 587.9 | 590 |
| | | 4.0' | 5.0' | 831.7 | 830 |
| | | 3.0' | 6.0' | 1080.3 | 1080 |
| | | 2.0' | 7.0' | 1333.9 | 1335 |
| | | 1.0' | 8.0' | 1589.9 | 1590 |
| <u>KS 135</u> double raked no plans assume 20' rakes 18" headlogs assume 18" light draft | 120x35x7 | 5.5' | 1.5' | 0.0 | 0 |
| | | 5.0' | 2.0' | 49.6 | 50 |
| | | 4.0' | 3.0' | 153.5 | 155 |
| | | 3.0' | 4.0' | 264.2 | 265 |
| | | 2.0' | 5.0' | 381.7 | 380 |
| | | 1.0' | 6.0' | 510.0 | 510 |
| <u>KS 1355</u> ex WH 723 assume 18" light draft | 135x55x8 | 6.5' | 1.5' | 0.0 | 0 |
| | | 6.0' | 2.0' | 103.1 | 105 |
| | | 5.0' | 3.0' | 313.4 | 315 |
| | | 4.0' | 4.0' | 529.6 | 530 |
| | | 3.0' | 5.0' | 751.4 | 750 |
| | | 2.0' | 6.0' | 978.9 | 960 |
| | | 1.0' | 7.0' | 1209.3 | 1210 |
| | | <u>KS 502</u> assume 15" light draft 10' rake | 110x50x7 | 5.75' | 1.25' |
| 5.0' | 2.0' | | | 120.4 | 120 |
| 4.0' | 3.0' | | | 283.7 | 285 |
| 3.0' | 4.0' | | | 450.2 | 450 |
| 2.0' | 5.0' | | | 619.7 | 620 |
| 1.0' | 6.0' | | | 790.8 | 790 |