

KS-1355

Deck Barge:135'x55'X 8'

USCG Number:



Specifications:

VESSEL NAME: KS-1355

DIMENSIONS: 135'X55'X8'

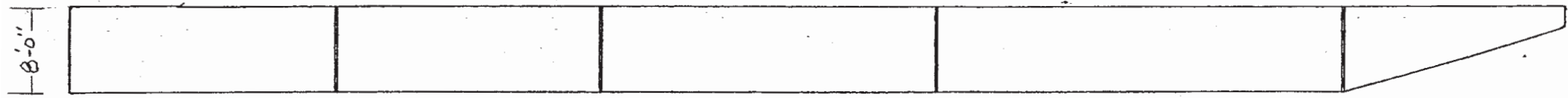
LOAD CAPACITY: 1,200 tons

BUILDER: Conrad Industries

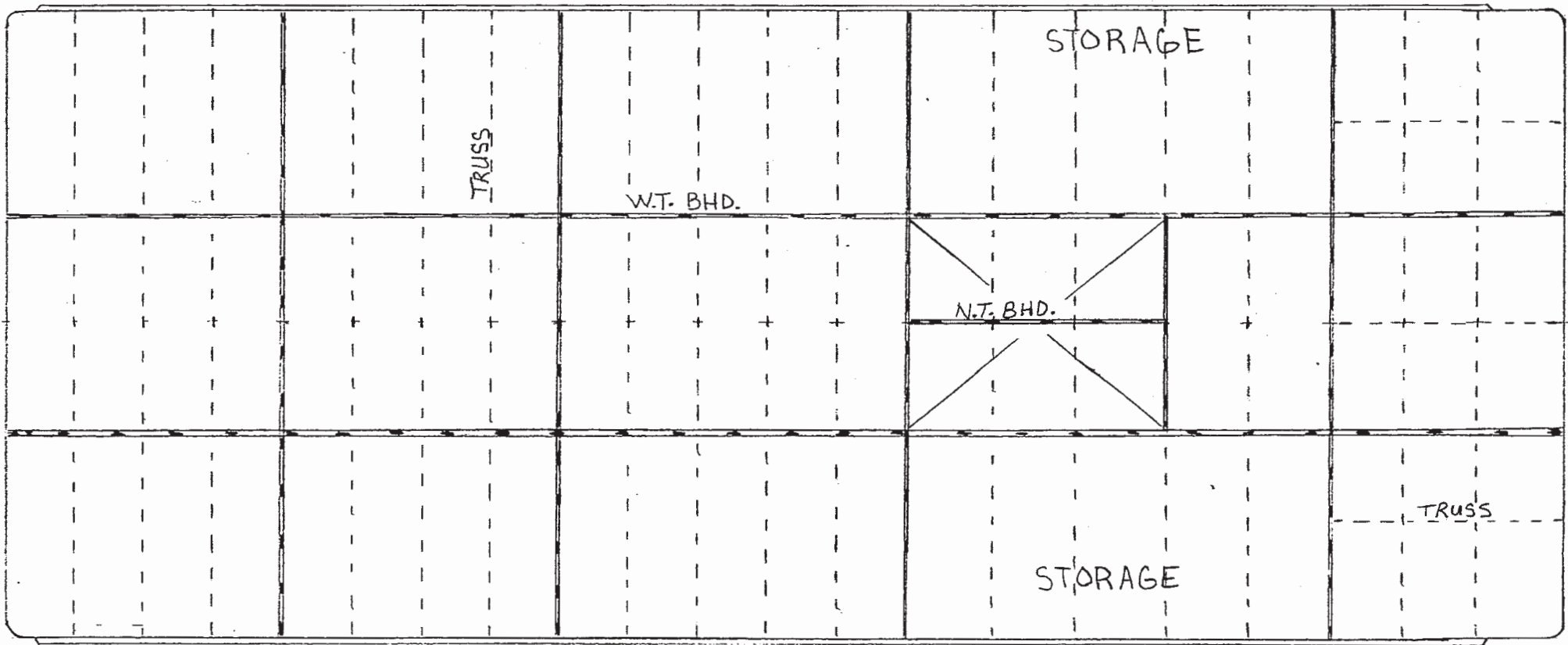
LIGHT DRAFT: 18"

GROSS TONNAGE: 498 tons

LAST DRY DOCK: 2022

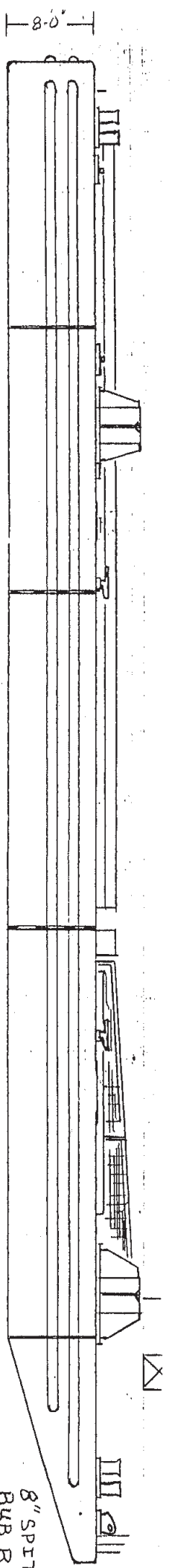


$4 \text{ SPACES @ } 6'-0" = 24'-0"$
 \times
 $4 \text{ SPACES @ } 6'-0" = 24'-0"$
 \times
 $5 \text{ SPACES @ } 6'-0" = 30'-0"$
 \times
 $5 \text{ SPACES @ } 7'-40" = 37'-0"$
 \times
 $6'-3"$
 \times
 $6'-3"$
 \times
 $7'-6"$

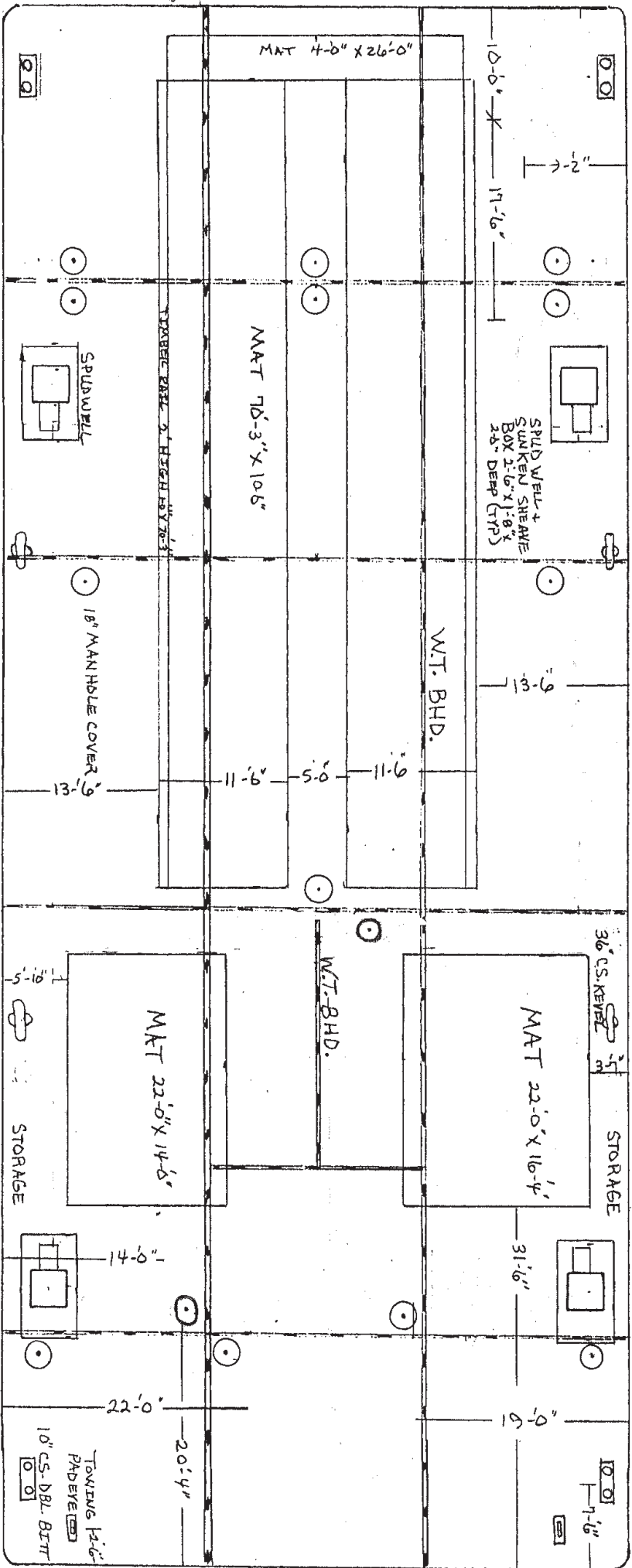


$24'-0"$
 \times
 $24'-0"$
 \times
 $30'-0"$
 \times
 $37'-0"$
 \times
 $20'-0"$

$135'-0"$



47'-6"±
33'-0"
47'-6"±
23'-6"



GENERAL ARRANGEMENT

135'-6"

Displacement Table

Barge Name	Barge Size	Freeboard	Draft	Displacement Short Tons	
<u>KS 452</u> ex WH 705 assume 18" light draft	135x45x9	7.5'	1.5'	0	0
		7.0'	2.0'	86	86
		6.0'	3.0'	261.4	260
		5.0'	4.0'	440.1	440
		4.0'	5.0'	622.1	620
		3.0'	6.0'	807.2	810
		2.0'	7.0'	995.3	995
		1.0'	8.0'	1183.7	1185
<u>KS 132</u> ex WH 702 <u>KS 133</u> ex WH 703 assume 18" light draft	120x35x8	6.5'	1.5'	0	0
		6.0'	2.0'	57.3	55
		5.0'	3.0'	174.5	175
		4.0'	4.0'	295.1	295
		3.0'	5.0'	419	420
		2.0'	6.0'	546.2	545
		1.0'	7.0'	676.4	675
<u>U-150</u> ex WH 735 KS 1503 ex WH 724 KS 1504 ex WH 734 assume 18" light draft	150x55x9	7.5'	1.5'	0	0
		7.0'	2.0'	115.1	115
		6.0'	3.0'	349.1	350
		5.0'	4.0'	587.9	590
		4.0'	5.0'	831.7	830
		3.0'	6.0'	1080.3	1080
		2.0'	7.0'	1333.9	1335
		1.0'	8.0'	1589.9	1590
<u>KS 135</u> double raked no plans assume 20' rakes 18" headlogs assume 18" light draft	120x35x7	5.5'	1.5'	0.0	0
		5.0'	2.0'	49.6	50
		4.0'	3.0'	153.5	155
		3.0'	4.0'	264.2	265
		2.0'	5.0'	381.7	380
		1.0'	6.0'	510.0	510
<u>KS 1355</u> ex WH 723 assume 18" light draft	135x55x8	6.5'	1.5'	0.0	0
		6.0'	2.0'	103.1	105
		5.0'	3.0'	313.4	315
		4.0'	4.0'	529.6	530
		3.0'	5.0'	751.4	750
		2.0'	6.0'	978.9	960
		1.0'	7.0'	1209.3	1210
		<u>KS 502</u> assume 15" light draft 10' rake	110x50x7	5.75'	1.25'
5.0'	2.0'			120.4	120
4.0'	3.0'			283.7	285
3.0'	4.0'			450.2	450
2.0'	5.0'			619.7	620
1.0'	6.0'			790.8	790