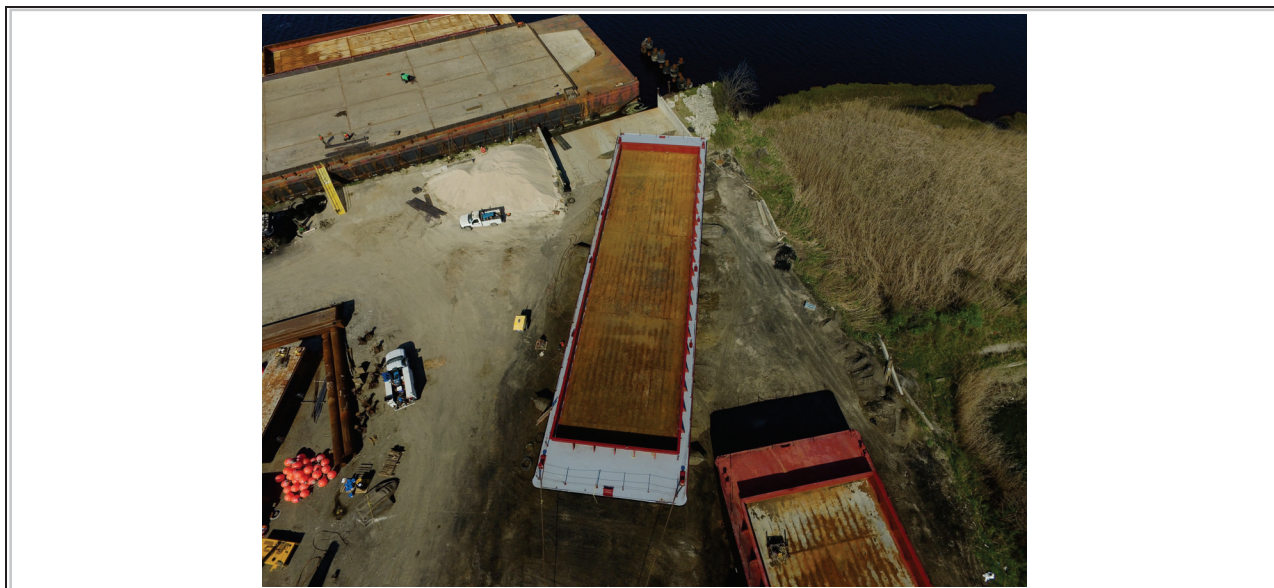


Witte 1408

Bin Wall:158'x43'x12'

USCG Number: 1205212



Specifications:

VESSEL NAME: WITTE 1408

DIMENSIONS: 158.4'X43.5'X12'

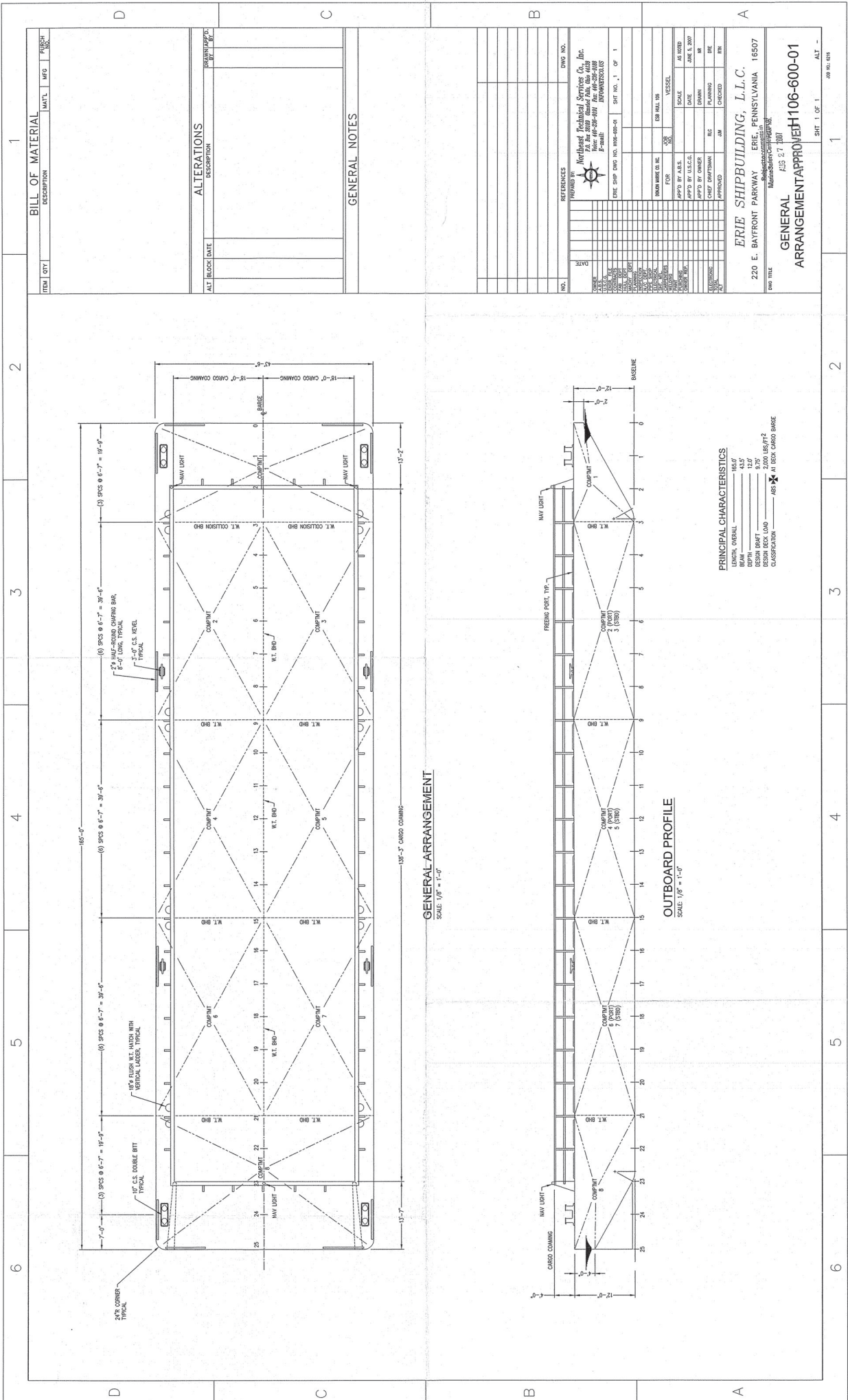
LOAD CAPACITY: 1,400 tons

BUILDER: DONJON SHIPBUILDING

LIGHT DRAFT: 1'9"

GROSS TONNAGE: 602 tons

LAST DRY DOCK: 2022



BILL OF MATERIAL

ITEM	QTY	DESCRIPTION	MAT'L	MFG	FIGURE

ALTERATIONS

ALT	RECORD DATE	DESCRIPTION	APPROVED BY

GENERAL NOTES

REFERENCES

NO.	DATE	DESCRIPTION

PROPOSED BY Northeast Technical Services Co., Inc.
 724 Ave. 2000, Newark, Pa. 15759
 Phone: (412) 231-4411 Fax: (412) 231-4415
 E-Mail: nts@earthlink.net

DATE SHIP DOWNS NO. 1006-000-01 **SHIP NO.** 1 OF 1

NO.	DATE	DESCRIPTION	APPROVED BY	DATE

ERIE SHIPBUILDING, L.L.C.
 220 E. BAYFRONT PARKWAY ERIE, PENNSYLVANIA 16507
 Phone: (814) 399-1000 Fax: (814) 399-1001
 E-Mail: sales@erishipbuilding.com

GENERAL ARRANGEMENT APPROVED 106-600-01

DATE: AUG 27 2001

GENERAL ARRANGEMENT
 SCALE: 1/8" = 1'-0"

OUTBOARD PROFILE
 SCALE: 1/8" = 1'-0"

PRINCIPAL CHARACTERISTICS

LENGTH OVERALL	165'-0"
BEAM	43'-5"
DEPTH	12'-0"
DESIGN DRAUGHT	12'-0"
DESIGN DECK LOAD	2200 LBS./FT ²
CLASSIFICATION	ABS * AT DECK CARGO BARGE